

HEALTHCARE
PRODUCTS

BATHROOM
PRODUCTS

RECYCLING
PRODUCTS

OUTDOOR
PRODUCTS

STANDARD
PRODUCTS

PRODUCT CATALOGUE 2017



P A R A G O N P R O D U C T S



Manufactured by

TALTECH
ENGINEERING HOLDINGS LTD

Paragon Products is a brand developed by Taltech Engineering to showcase the most popular range of products we manufacture.

These include products for specific applications:

- Product Design & Development
- Metal & Sheet Metal Fabrication
- Specialist Stainless Steel Work
- Powder Coating
- Graphics Visual Studio

Taltech Engineering was established in 1984 as a specialist, precision manufacturer working closely with customer to develop products to meet specific needs. The company operates in a 6.000 square metre premises, with a 26 person team of experienced industry engineers, technicians and support personnel.

Our area of expertise include:

- Product Design & Development
- Metal & Sheet Metal Fabrication
- Specialist Stainless Steel Work
- Powder Coating
- Graphics Visual Studio

We implement a pro-active Environmental policy, which influences our production methods and the products manufactured.

We also work hard to deliver the most cost-effective solution for customer avoiding cost where appropriate.



Design & Product Development

Design Team

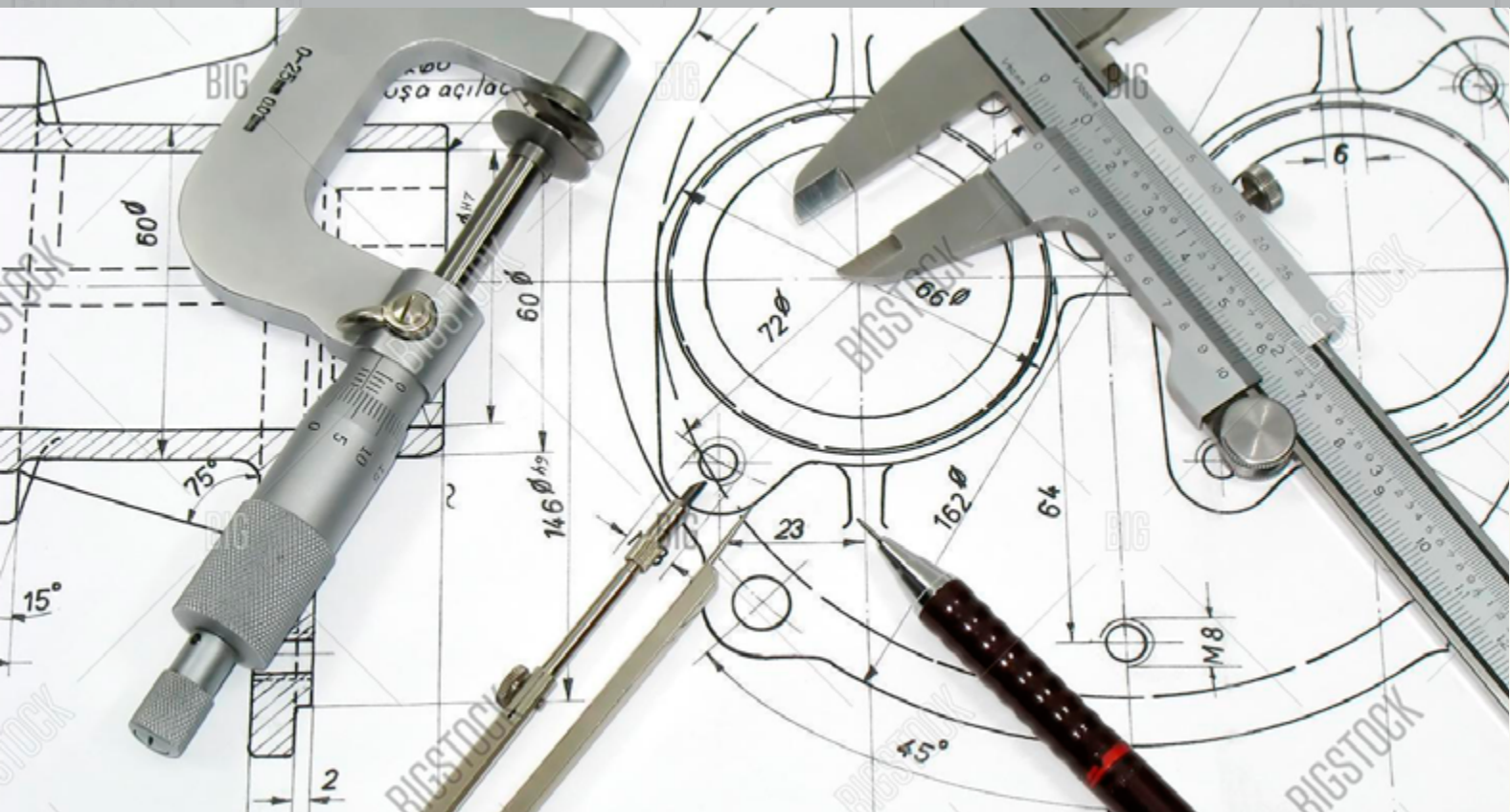
As we manufacture our own products, we have considerable scope to be flexible and make changes at the design stage. This collaborative process is where our Design Team Excel, adding value to your requirements, going through individual needs and suggesting useful product enhancements or changes. In terms of handling waste, for example, we can contact your waste carrier to discuss the best option in relation to separating waste.

We design and manufacture a variety of of standard product:

- RECYCLING PRODUCTS
- LITTER BINS
- HEALTHCARE RANGE
- OUTDOOR FURNITURE

Design Resources

Over the past 25 years we have gained vast experience and knowledge within the engineering industry and our Design & Resources Department uses this understanding with the latest design software and equipment to ensure that customers needs are met.



Guaranteed Quality from Paragon

Paragon Products are manufactured to the highest Quality standards and processes. We have taken numerous steps to implement the necessary procedures to attain Quality Management System ISO 9001:2008 and other relevant certification. We have also implemented our own Guaranteed Products.

Warranty - this is a 3 Years Warranty - which is almost unique in the industry.



Quality Steel, Paint & Finished

The main steel material used in our products is a rust resistant Electrolytically Zinc Coated Cold Rolled Steel which is certified to BS EN 10152:2009.

Our Powder Coated finish is certified to BS476 Part 6 Fire.

Propagation & Part 7 Class 1 Spread of Flame.

Steri-touch Anti-Bacterial Surface Finish

Steri-touch anti-bacterial surface finish is available on all our Healthcare Products as standard. This surface finish gives the product protection against super bugs such as E-coili & MRSA, where the unit will self-sanitise within 10-3- minutes of initial contact.

SteriTouch[®]
ANTIBACTERIAL PROTECTION



Manufactured by

TALTECH
ENGINEERING HOLDINGS LTD

CONTENTS

 STANDARD PRODUCTS

 BATHROOM

 OUTDOOR

 RECYCLING

 HEALTHCARE

 LABELLING & COLOURS

 PRODUCTS IN LOCATION

LARGE PEDAL BIN



PRODUCT CODE

1000W

DIMENSIONS

HEIGHT: 845 mm
 WIDTH: 440 mm
 DEPTH: 290 mm
 VOLUME: 90L
 BAG: 26` x 44`

LARGE PEDAL BIN WITH DOOR



PRODUCT CODE

1000FA

DIMENSIONS

HEIGHT: 845 mm
 WIDTH: 440 mm
 DEPTH: 290 mm
 VOLUME: 90L
 BAG: 26` x 44`

MEDIUM PEDAL BIN



PRODUCT CODE

1010

DIMENSIONS

HEIGHT: 720 mm
 WIDTH: 330 mm
 DEPTH: 320 mm
 VOLUME: 50L
 BAG: 20` x 37`

SMALL PEDAL BIN



PRODUCT CODE

1020

DIMENSIONS

HEIGHT: 570 mm
 WIDTH: 210 mm
 DEPTH: 270 mm
 VOLUME: 20L
 BAG: 15` x 24`

Available in stainless steel



LARGE ECO
PEDAL BIN

PRODUCT CODE

1200

DIMENSIONS

HEIGHT: 845 mm
 WIDTH: 490 mm
 DEPTH: 325 mm
 VOLUME: 90L
 BAG: 16` x 44`



AVAILABLE WITH SLOW CLOSE SYSTEM

- Manufactured from Zintec Pre-Coated Steel / Polyester Powder Coated
- range of Colours & Finishes available
- Fire Retardant Cert SII 210/2
- Hands free Pedal Operated Lid Silent Closing Lid available
- Castors available Screening
- Labelling available

LARGE OFFICE BIN



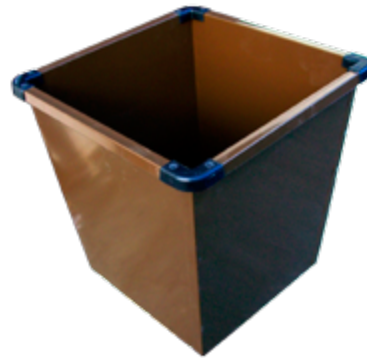
PRODUCT CODE

5010

DIMENSIONS

HEIGHT: 570 mm
WIDTH: 330 mm
DEPTH: 330 mm

SMALL OFFICE BIN



PRODUCT CODE

5000

DIMENSIONS

HEIGHT: 330 mm
WIDTH: 330 mm
DEPTH: 330 mm

OFFICE BINS INSERTS



PRODUCT CODE

5050

DIMENSIONS

HEIGHT: 570 mm
WIDTH: 165 mm
DEPTH: 330 mm



WASTE BASKET PERFORATED



PRODUCT CODE

5024

DIMENSIONS

HEIGHT: 310 mm
WIDTH: 200 mm
DEPTH: 200 mm

RAINBOW WASTE BASKETS



PRODUCT CODE

5024

DIMENSIONS

HEIGHT: 300 mm
WIDTH: 280 mm
DEPTH: 280 mm

WASTE BASKET RECTANGULAR 13.2L

PRODUCT CODE

5022

DIMENSIONS

HEIGHT: 310 mm
WIDTH: 210 mm
DEPTH: 280 mm
CAPACITY: 13.2L



WASTE BASKET RECTANGULAR 6.6 L

PRODUCT CODE

5023

DIMENSIONS

HEIGHT: 260 mm
WIDTH: 210 mm
DEPTH: 280 mm
CAPACITY: 6.6L

STANDARD OPEN TYPE



PRODUCT CODE

3000

DIMENSIONS
 HEIGHT: 860 mm
 WIDTH: 490 mm
 DEPTH: 325 mm

ECO OPEN TYPE STAINLESS STEEL



PRODUCT CODE

1240S

DIMENSIONS
 HEIGHT: 825 mm
 WIDTH: 420 mm
 DEPTH: 270 mm

OPEN TYPE RECYCLE BIN X2



PRODUCT CODE

1240x2

DIMENSIONS
 HEIGHT: 825 mm
 WIDTH: 980 mm
 DEPTH: 325 mm

OPEN TYPE RECYCLE BIN X3



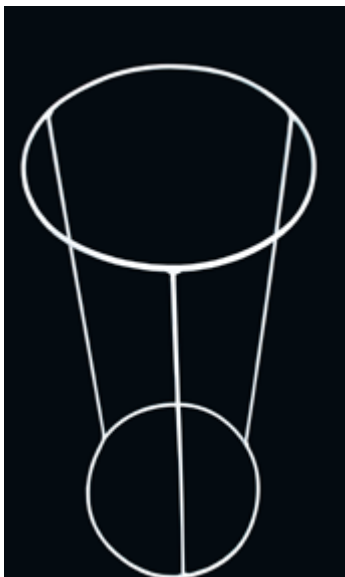
PRODUCT CODE

1240x3

DIMENSIONS
 HEIGHT: 825 mm
 WIDTH: 1470 mm
 DEPTH: 325 mm

- Pre-coated Zintec Steel
- Polyester Powder
- Range of colours available
- Pedal Operated

WIRE BIN



PRODUCT CODE

3010

DIMENSIONS
 HEIGHT: 850 mm
 DIAMETER 450 mm

BLACK BAG HOLDER



PRODUCT CODE

3011

DIMENSIONS
 HEIGHT: 1130 mm
 WIDTH: 380 mm
 DEPTH: 340 mm
 BASE:
 380mm x 380 mm
 BAG CAPACITY: 90L

- Zinc Coated Mild Steel
- Powder Coated in Epoxy / Polyester Stainless Steel
- Fully Stainless Steel Unit also Available



X 4 WHEELS

**Available in
 Stainless Steel**

TRADITIONAL FREE-STANDING ASH BIN



PRODUCT CODE
6070

DIMENSIONS
HEIGHT: 1000 mm
WIDTH: 200 mm
DEPTH: 200 mm

- Zintec Pre-Coated Steel Body
- Powder Coated in Epoxy Polyester
- Fully Stainless Steel Unit also Available/
- Free standing Unit
- Holes in Base for Ground Fixing
- External Baseplate also Available
- Internal Galvanised Liner
- Locking System with Tri-insert key

TAPERED FREE-STANDING ASH BIN



PRODUCT CODE
6071

DIMENSIONS
HEIGHT: 1000 mm
WIDTH: 200 mm
DEPTH: 150 mm

- Zintec Pre-Coated Steel Body Powder Coated in Epoxy Polyester
- Stainless Subbing Plate
- Fully Stainless Steel Unit also Available
- Free standing Unit
- Holes in Base for Ground Fixing
- Internal Galvanised Liner included
- Locking System with Tri-insert Key
- Pivoted Drop Down Front for emptying
- Fire Retardant

PYRAMID FREE- STANDING ASHBIN



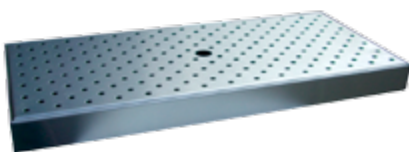
PRODUCT CODE
6061

DIMENSIONS
HEIGHT: 1000 mm
WIDTH: 200 mm
DEPTH: 200 mm

- Zintec Pre-Coated Steel Body
- Powder Coated in Epoxy / Polyester Stainless Steel
- Fully Stainless Steel Unit also Available
- Holes in Base for Ground Fixing
- Internal Galvanised Liner include
- Locking System with Tri-insert Key
- Fire Retardant

DRIP TRAYS

PRODUCT CODE
30010-30040



PRODUCT CODE	DIMENSION	COLOUR
30010	457 X 203 mm	STAINLESS STEEL
30005	609 X 203 mm	STAINLESS STEEL
30015	914 x 203 mm	STAINLESS STEEL
30025	457 x 152 mm	STAINLESS STEEL
30035	609 x 152 mm	STAINLESS STEEL
30040	914 x 152 mm	STAINLESS STEEL

SMOKE BUSTER ASH BIN - WALL MOUNTED CURVED ASH BIN- WALL MOUNTED



PRODUCT CODE

6063

DIMENSIONS
HEIGHT: 335 mm
WIDTH: 220 mm
DEPTH: 100 mm

- Available in Galvanised Pre-coated Steel
- Powder Coated in Epoxy Polyester
- All Finishes & Colours available
- Stainless Steel Unit also Available
- Wall Mountable - Fixings Included
- Internal Galvanised Liner included
- Cam locking System with Key
- Pivoted Drop Down Front for emptying
- Fire Retardant



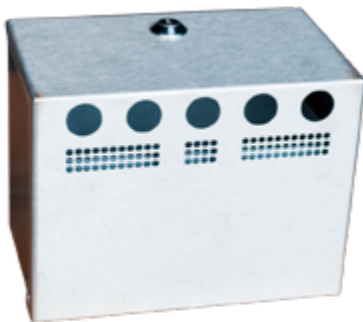
PRODUCT CODE

6066

DIMENSIONS
HEIGHT: 240 mm
WIDTH: 160 mm
DEPTH: 120 mm

- Zintec Pre-Coated Steel Body
- Powder Coated in Epoxy Polyester
- All Finishes & Colours available
- Stainless Steel Front Brushed Finish
- Fully stainless Steel Unit also Available
- Wall Mountable - Fixings Included
- Internal Galvanised Liner included
- Locking System with Allen Key
- Pivoted Drop Down Front for emptying

THE ASHBOX - WALL MOUNTED



PRODUCT CODE

6059

DIMENSIONS
HEIGHT: 150 mm
WIDTH: 200 mm
DEPTH: 120 mm

- Manufactured from Zintec
- Stainless Steel Top/Front
- All Finishes & Colours available
- Wall Mountable - Fixings Included
- Internal Galvanised Liner included
- Camlocking System with Key

HEAVY DUTY ASH BIN - WALL MOUNTED



PRODUCT CODE

6068

DIMENSIONS
HEIGHT: 350 mm
WIDTH: 255 mm
DEPTH: 105 mm

- Heavy Duty Unit, Available in Galvanised
- Pre-coated Steel
- Powder Coated in Epoxy Polyester
- Wall Mountable - Fixings Included
- Internal Galvanised Liner included
- Tri-insert Heavy Duty Locking System with Key
- Pivoted Drop Down Front for emptying
- Fire Retardant



STANDARD MODULAR LOCKERS

PRODUCT CODE

Lockers 405

DIMENSIONS

HEIGHT: 1830 mm
 WIDTH: 450 mm
 DEPTH: 450 mm



PRODUCT CODE

Lockers 305

DIMENSIONS

HEIGHT: 1900 mm
 WIDTH: 305 mm
 DEPTH: 305 mm

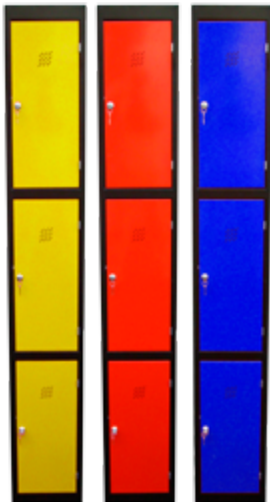
SLK 3 COMPARTMENT LOCKER

PRODUCT CODE

4102SLK

DIMENSIONS

HEIGHT: 1900 mm
 WIDTH: 300 mm
 DEPTH: 450 mm



TLK 2 COMPARTMENT LOCKER

PRODUCT CODE

4103TLK

DIMENSIONS

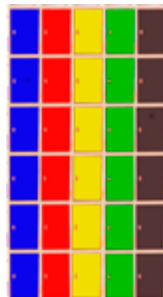
HEIGHT: 1900 mm
 WIDTH: 300 mm
 DEPTH: 450 mm



- Manufactured in Zintec Pre-Coated Steel
- Polyester Powder Coated
- All Finishes & Colours available
- Sloped or Flat Top
- Air Vents fitted
- Name tags Frames available
- Labelling available



4 DOORS



6 DOORS



8 DOORS

GARMENT LOCKER



PRODUCT CODE

4110

DIMENSIONS

HEIGHT: 1830 mm
 WIDTH: 305 mm
 DEPTH: 305 mm

- Manufactured in Zintec Pre-Coated Steel
- Polyester Powder Coated
- All Colour Combinations available
- All Finishes & Colours available
- Sloped or Flat Top
- Air Vents fitted
- Name tags Frames available
- Labelling available

LOCKERS-LARGE



PRODUCT CODE

Lockers Large

DIMENSIONS

HEIGHT: 1890 mm
 WIDTH: 460 mm
 DEPTH: 460 mm

- Manufactured in Zintec Pre-Coated Steel
- Polyester Powder Coated
- All Colour Combinations available
- Sloped or Flat Top
- Air Vents fitted
- Name tags Frames available
- Labelling available
- Adjustable Feet fitted
- Large storage area
- Modular Design

LOCKER ROOM BENCH



PRODUCT CODE

8100

DIMENSIONS

WIDTH: 1500 mm
 SEAT HEIGHT: 405mm

- Manufactured in Steel
- Polyester Powder Coated
- All Colour Combinations available
- Double sided unit
- Rust Resistant Primer System
- Hardwood Slats fitted for seating area
- Lockable Swivel Castors available for Mobility
- Coat Hooks fitted overhead

Locking Systems

KEYLOCK



COMBINATION



COMBINATION



LATCHLOCK



COIN LOCK



SLIP BIN STAINLESS STEEL



PRODUCT CODE

8085

DIMENSIONS

HEIGHT: 340 mm
 WIDTH: 220 mm
 DEPTH: 60 mm

- Manufactured in Zintec Pre-Coated Steel
- Polyester Powder Coated All Finishes & Colours available
- Key Locking System
- Hinged Door on Front of Unit

SLIP BIN



PRODUCT CODE

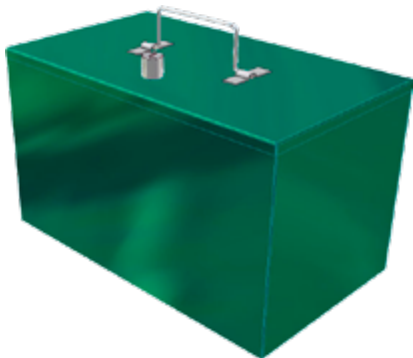
8085B

DIMENSIONS

HEIGHT: 340 mm
 WIDTH: 220 mm
 DEPTH: 60 mm

- Manufactured in Zintec Pre-Coated Steel
- Polyester Powder Coated
- All Finishes & Colours available
- Key Locking System
- Hinged Door on Front of Unit

SINGLE POSTBOX



PRODUCT CODE

29015

DIMENSIONS

HEIGHT: 200 mm
 WIDTH: 340 mm
 DEPTH: 200 mm

- Manufactured in Zintec Pre-Coated Steel
- Polyester Powder Coated
- Durable Heavy Duty Unit
- All Colour Combinations available
- All Finishes & Colours available
- Heavy Duty Locking System
- Handle fitted
- Hinged Lid System

SINGLE POSTBOX



PRODUCT CODE

28010

DIMENSIONS

HEIGHT: 300 mm
 WIDTH: 450 mm
 DEPTH: 460 mm

- Manufactured in Zintec Pre-Coated Steel
- Polyester Powder Coated
- Durable Heavy Duty Unit
- All Colour Combinations available
- All Finishes & Colours available
- Heavy Duty Locking System
- Handle fitted
- Door on Front of Unit

SINGLE POSTBOX



PRODUCT CODE

1109

DIMENSIONS
HEIGHT:
WIDTH:
DEPTH:

- Manufactured in Zintec Pre-Coated Steel
- Polyester Powder Coated
- All Finishes & Colours available
- Heavy Duty Locking System
- Hinged Door on Front of Unit
- Available Wall or Pole Mountable
- Pole also Available

10 BAY POSTBOX



PRODUCT CODE

1110

20 Bay Postbox available

- Manufactured in Zintec Pre-Coated Steel
- Polyester Powder Coated
- All Finishes & Colours available
- 10 Individual Bays
- Hinged Doors on Front of Unit
- All Doors Keyed Differently

SINGLE POSTBOX



PRODUCT CODE

1111

DIMENSIONS
HEIGHT: 560 mm
WIDTH: 395 mm
DEPTH: 105 mm

- Manufactured in Zintec Pre-Coated Steel
- Polyester Powder Coated
- All Finishes & Colours available
- Heavy King System
- Hinged Door on Front of Unit
- Mountable on any surface



LEVER ARCH POSTBOX



PRODUCT CODE

1112

DIMENSIONS
HEIGHT:
WIDTH:
DEPTH:

- Manufactured in Zintec Pre-Coated Steel
- Polyester Powder Coated
- All Finishes & Colours available
- Heavy Duty Locking System
- Hinged Door on Front of Unit
- Mountable on any surface

Postbox is large enough for Lever Arch files

Choices available include the Lever Arch Post Box, the 20 Bay Post Box and the Pole Mounted Post Box. All steel boxes are equipped with a heavy duty locking system where every bay door is given its own individual key. All Paragon Products mailboxes are manufactured from steel and can come in a stainless steel finish or in a variety of colours. Our post boxes are suitable for both indoor and outdoor use and provide security and privacy to your letters and parcels.

ADJUSTABLE VINYL
SINGLE GLOVE BOX

PRODUCT CODE

9048

DIMENSIONS

HEIGHT: 135 mm
 WIDTH: 250 mm
 DEPTH: 90 mm

2 WAY OR 3 WAY
COMBI GLOVE BOX

PRODUCT CODE

9051

DIMENSIONS

HEIGHT: 250 mm
 WIDTH: 410 mm
 DEPTH: 90 mm

SMALL FLAT PACK APRON DISPENSER



PRODUCT CODE

9040

DIMENSIONS

HEIGHT: 250 mm
 WIDTH: 280 mm
 DEPTH: 90 mm

POLY GLOVE DISPENSER



PRODUCT CODE

9056

DIMENSIONS

HEIGHT: 465 mm
 WIDTH: 410 mm
 DEPTH: 90 mm

FLAT PACK APRON DISPENSER



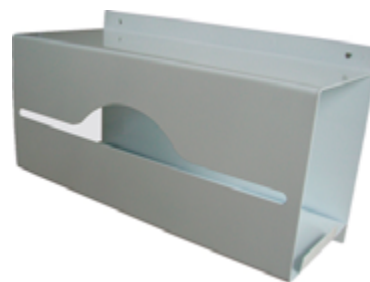
PRODUCT CODE

4086

DIMENSIONS

HEIGHT: 380 mm
 WIDTH: 440 mm
 DEPTH: 90 mm

APRON ROLL



PRODUCT CODE

4085

DIMENSIONS

HEIGHT: 205 mm
 WIDTH: 365 mm
 DEPTH: 150 mm

SICSAC HOLDER



PRODUCT CODE

9086

DIMENSIONS

HEIGHT: 470 mm
 WIDTH: 125 mm
 DEPTH: 140 mm

MASK WALL BRACKET



PRODUCT CODE

9049

DIMENSIONS

HEIGHT: 130 mm
 WIDTH: 110 mm
 DEPTH: 50 mm

MULTI DISPENSER



PRODUCT CODE

9055

DIMENSIONS

HEIGHT: 700 mm

WIDTH: 510mm

DEPTH: 110mm

- Manufactured in Zintec Pre-Coated Steel
- Polyester Powder-Coated in White
- All Finishes & Range of Colours available
- All Box Sizes Catered for
- Anti-bacterial Finish available
- 2 Pass Rust Resistant Primer System

COLOURED OPTION-
BIN WITH COLOURED
LID
OPTION



We at Paragon Products offer dispensers specific to many types of gloves, such as vinyl or poly gloves, and cater for those that wish to have an all-in-one dispenser for gloves, masks and aprons. We also offer apron roll dispensers and apron flat pack dispensers, giving your healthcare facility the perfect solution for accessing aprons for medical and surgical activities. Also, we combine our apron and glove dispensers with a medical mask dispensing unit, allowing you a multiple function dispenser for your healthcare supplies.

We cater to all-sizes of boxes and our dispensers come with the SteriTouch Anti-Bacterial finish. Functional and durable, our dispensers are available in all finishes, colours and in stainless steel.

PLASTIC PEDAL
BIN YELLOW 20L



PRODUCT CODE

PED 183

DIMENSIONS

HEIGHT: 410 mm
WIDTH: 310 mm
DEPTH: 310 mm
CAPACITY: 20L

PLASTIC PEDAL
BIN YELLOW 12L



PRODUCT CODE

PED 185

DIMENSIONS

HEIGHT: 340 mm
WIDTH: 270 mm
DEPTH: 270 mm
CAPACITY: 12L

PLASTIC PEDAL BIN WHITE



PRODUCT CODE

PED 185

PRODUCT CODE

PED 183

PRODUCT CODE

PED 182

PED 185/PL 12L PLASTIC PEDAL BIN 340 X 270 X 270 MM WHITE

PED 183/PL 20L PLASTIC PEDAL BIN 410 X 310 X 310 MM WHITE

PED 182/PL 40L PLASTIC PEDAL BIN 530 X 380 X 380 MM WHITE

PLASTIC SANI BIN 12L



PRODUCT CODE

5072

DIMENSIONS

HEIGHT: 463 mm

WIDTH: 140 mm

DEPTH: 480 mm

CAPACITY: 12L

PLASTIC BIN

PLASTIC SANI BIN 20L



PRODUCT CODE

5073

DIMENSIONS

HEIGHT: 510 mm

WIDTH: 160 mm

DEPTH: 575 mm

CAPACITY: 20L

PLASTIC BIN

PLASTIC NAPPY BIN 50 L



PRODUCT CODE

2077

DIMENSIONS

HEIGHT: 530 mm

WIDTH: 400 mm

DEPTH: 360 mm

CAPACITY: 50L

PLASTIC BIN

SANI BIN WHITE - STEEL



PRODUCT CODE

2070W

DIMENSIONS

HEIGHT: 520 mm

WIDTH: 155 mm

DEPTH: 250 mm

CAPACITY: 17L

METAL BIN

SANI BIN STAINLESS STEEL 17L



PRODUCT CODE

2070S

DIMENSIONS

HEIGHT: 520 mm

WIDTH: 155 mm

DEPTH: 250 mm

CAPACITY: 17L

METAL BIN

NAPPY BIN STAINLESS STEEL 50 L



PRODUCT CODE

2076S

DIMENSIONS

HEIGHT: 810 mm

WIDTH: 380 mm

DEPTH: 400 mm

CAPACITY: 50L

- Waste Chute System Lid
- Lockable Front Door
- Internal Galvanised Liner
- Available in all colours
- Anti-Bacterial Surface Finish
- Labelling included
- Raised Plastic Non Marking Feet

Powder-Coated
Steel
Available

METAL BIN

STAINLESS SOAP DISPENSER 800ml



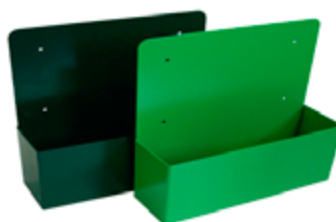
PRODUCT CODE

4040

DIMENSIONS
 HEIGHT: 200 mm
 WIDTH: 110 mm
 DEPTH: 70 mm
 CAPACITY: 800ml



BOTTLE BRACKET 3 X 750 ML



PRODUCT CODE

4065

DIMENSIONS
 HEIGHT: 305 mm
 WIDTH: 280 mm
 DEPTH: 90 mm

JUMBO ROLL HOLDER

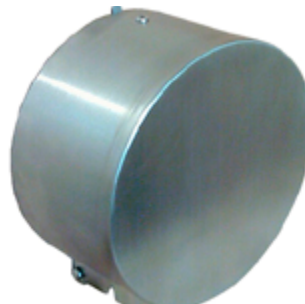


PRODUCT CODE

9085

DIMENSIONS
 HEIGHT: 280 mm
 DIAMETER: 130 mm

MIDI ROLL HOLDER



PRODUCT CODE

9000

DIMENSIONS
 HEIGHT: 250 mm
 DIAMETER: 130 mm

C - Z FOLD DISPENSER



PRODUCT CODE

9065

DIMENSIONS
 HEIGHT: 280 mm
 WIDTH: 250 mm
 DEPTH: 120 mm

CENTRE PULL DISPENSER



PRODUCT CODE

9010

DIMENSIONS
 HEIGHT: 280 mm
 WIDTH: 280 mm
 DEPTH: 250 mm



TOILET PAPER DISPENSER

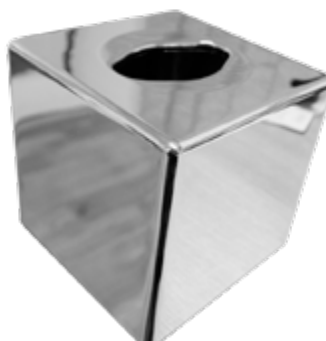


PRODUCT CODE

9001

DIMENSIONS
 HEIGHT: 140 mm
 WIDTH: 140mm
 DEPTH: 110 mm

TISSUE BOX DISPENSER



PRODUCT CODE

9002

DIMENSIONS
 HEIGHT: 130 mm
 WIDTH: 130 mm
 DEPTH: 130 mm

ROUND PEDAL BIN 12L



PRODUCT CODE

5036

DIMENSIONS

HEIGHT: 400 mm
 WIDTH: 250 mm
 DEPTH: 250 mm
 VOLUME: 12L

ROUND PEDAL BIN 20L



PRODUCT CODE

5035

DIMENSIONS

HEIGHT: 440 mm
 WIDTH: 250 mm
 DEPTH: 250 mm
 VOLUME: 20L

ROUND PEDAL BIN 30L



PRODUCT CODE

5037

DIMENSIONS

HEIGHT: 650 mm
 WIDTH: 250 mm
 DEPTH: 250 mm
 VOLUME: 30L

STAINLESS STEEL SWING BIN



PRODUCT CODE

5039

DIMENSIONS

HEIGHT: 1000 mm
 WIDTH: 330 mm
 DEPTH: 300 mm
 CAPACITY: 80L

TOWEL BIN



PRODUCT CODE

9070T

DIMENSIONS

HEIGHT: 760 mm
 WIDTH: 380 mm
 DEPTH: 380 mm
 CAPACITY: 70L

SAFETY BIN



PRODUCT CODE

9070

DIMENSIONS

HEIGHT: 630 mm
 WIDTH: 335 mm
 DEPTH: 335 mm
 CAPACITY: 50L

STAINLESS STEEL PUSH BIN 52L



PRODUCT CODE

6942

DIMENSIONS

HEIGHT: 940 mm
 WIDTH: 380 mm
 DEPTH: 380 mm
 CAPACITY: 50L



WASH ROOM BIN



PRODUCT CODE

9071

DIMENSIONS

HEIGHT: 750 mm
 WIDTH: 380 mm
 DEPTH: 380 mm
 VOLUME: 70L

METAL BINS

OPEN TOP BIN



PRODUCT CODE

5038

DIMENSIONS

HEIGHT: 750 mm
 WIDTH: 380 mm
 DEPTH: 380 mm
 VOLUME: 70L



PUSH BIN SATIN MATT 52L



PRODUCT CODE

6941

DIMENSIONS

HEIGHT: 940 mm
 WIDTH: 380 mm
 DEPTH: 380 mm
 CAPACITY: 52L



HD100



PRODUCT CODE

6410

DIMENSIONS

HEIGHT: 980 mm
 WIDTH: 480 mm
 DEPTH: 480 mm
 VOLUME: 100L

PYRAMID TOP STREET BIN 50L



PRODUCT CODE

6250S

DIMENSIONS

HEIGHT: 1100 mm
 WIDTH: 330 mm
 DEPTH: 330 mm
 VOLUME: 80L

HD120



PRODUCT CODE

6400

DIMENSIONS

HEIGHT: 980 mm
 WIDTH: 530 mm
 DEPTH: 530 mm
 VOLUME: 120L

PYRAMID TOP STREET BIN 50L



PRODUCT CODE

6108S

DIMENSIONS

HEIGHT: 1000 mm
 WIDTH: 350 mm
 DEPTH: 350 mm
 VOLUME: 50L

COUNCIL FLAT



PRODUCT CODE

6050

DIMENSIONS

HEIGHT: 980 mm
 WIDTH: 400 mm
 DEPTH: 460 mm
 VOLUME: 90L

FLAT TOP LITTER BIN 80L



PRODUCT CODE

6020

DIMENSIONS

HEIGHT: 900 mm
 WIDTH: 450 mm
 DEPTH: 400 mm
 VOLUME: 80L

FLAT TOP LITTER BIN 100L



PRODUCT CODE

6021

DIMENSIONS

HEIGHT: 950 mm
 WIDTH: 500 mm
 DEPTH: 500 mm
 VOLUME: 100L

- Zinc Coated Mild Steel
- Powder Coated in Epoxy Polyester
- Heavy Duty Tri-Insert Locking System
- Galvanised Liner included
- Handles fitted to Liner
- Stubbing Plate included
- Internal ashtray available
- Labelling Included

Available in Stainless or Powder Coated Steel

APEX TOP LITTER BIN 80L



PRODUCT CODE

6040

DIMENSIONS

HEIGHT: 900 mm
 WIDTH: 397 mm
 DEPTH: 397 mm
 VOLUME: 80L

- Zinc coated mild steel
- Powder Coated in Epoxy Polyester
- Large or Restricted openings available
- Heavy Duty Tri-Insert Locking System
- Galvanised Liner included
- Handles fitted to Liner
- Heavy Duty Door Hinge
- Stubbing Plate included
- Internal Ashtray available
- Labelling included as Standard

COUNCIL APEX TOP OUTDOOR BIN



PRODUCT CODE

6051

DIMENSIONS

HEIGHT: 1120 mm
 WIDTH: 400 mm
 DEPTH: 450 mm
 VOLUME: 100L

- Constructed from Galvanized Pre-Coated Steel
- Powder-coated in a Polyester Paint
- Heavy Duty Slam Lock System
- Also available in Stainless Steel
- Galvanised liner with Handles included
- Hidden Locking System
- Company Logos can be incorporated into the Bin Design

DOME TOP LITTER BIN 120L



PRODUCT CODE

6445

DIMENSIONS

HEIGHT: 1140 mm
 WIDTH: 400 mm
 DEPTH: 400 mm
 VOLUME: 120L

- Zinc coated mild steel
- Powder Coated in Epoxy Polyester
- 2 X 150mm Diameter Openings
- Fitted with Heavy Duty Proof Slam
- Close Lock
- Galvanised Liner included
- Handles fitted to Liner
- Stubbing Plate included
- Internal Ashtray available
- Labelling included as Standard



Stainless Steel Available

ROUND WALL/POLE LITTER BIN



PRODUCT CODE

6064

DIMENSIONS

HEIGHT: 1100 mm
 DIAMETER: 325 mm
 VOLUME: 50L

ROUND WALL/POLE LITTER BIN



PRODUCT CODE

6065

DIMENSIONS

HEIGHT: 1100mm
 DIAMETER: 330 mm
 VOLUME: 50L

Available in Stainless or Powder Coated Steel

1XTHROW IN OPENING OUTSIDE BIN



PRODUCT CODE

5039

DIMENSIONS
 HEIGHT: 755 mm
 DIAMETER: 400 mm
 VOLUME: 33L

- A compact range of outdoor bins
- All fitted with galvanised liner
- Wood effect Powder Coated steel strips
- The 69 Litre bin is made from black powder coated steel and is heavy duty and durable
- Aintwood sourround
- Black metal lid
- Comes with or without ashtray

DOMESTIC TOP LITTER BIN 120L



PRODUCT CODE

5038

DIMENSIONS
 HEIGHT: 755 mm
 DIAMETER: 400 mm
 VOLUME: 40L

- A compact range of outdoor bins
- All fitted with galvanised liner
- Wood effect Powder Coated steel strips
- The 69 Litre bin is made from black powder coated steel and is heavy duty and durable
- Aintwood sourround
- Black metal lid
- Comes with or without ashtray

ROUND PLASTIC LITTER BIN



PRODUCT CODE

6510

DIMENSIONS
 HEIGHT: 1040 mm
 DIAMETER: 520 mm
 VOLUME: 95L

- Manufactured from polyethylene
- Complete with galvanized liner
- Easy to use locking system as standard
- Full Banding, Lettering & Logo options available
- Removable lockable top gains entry for simple litter removal
- Full Banding, Lettering & Logo options available

BOYNE 100L



PRODUCT CODE

BOYNE 100

DIMENSIONS
 HEIGHT: 1100 mm
 DIAMETER: 325 mm
 VOLUME: 50L

- 100 litre plastic hooded street litter bin with galvanised liner
- Black, Blue, Green, Red colour available



SLANEY PLASTIC BIN



PRODUCT CODE

6903A

DIMENSIONS

HEIGHT: 1060 mm
 WIDTH: 470 mm
 DEPTH: 470 mm
 VOLUME: 140L

- The covered dome lid deters rubbish from being placed on the top
- Ground fixing bolts to secure the bin to the ground and a lid base a cable to keep two together are available



NORE PLASTIC BIN



PRODUCT CODE

6903B

DIMENSIONS

HEIGHT: 875 mm
 WIDTH: 470 mm
 DEPTH: 470 mm
 VOLUME: 140L

- Colours : Black, Grey, Green, Blue
- Patented Grab-bag system
- Made from impact plastic

BARROW OUTDOOR BIN



PRODUCT CODE

6903C

DIMENSIONS

HEIGHT: 1070 mm
 WIDTH: 470 mm
 DEPTH: 470 mm
 VOLUME: 140L

- The covered dome lid deters rubbish from being placed on the top
- Ground fixing bolts to secure the bin to the ground and a lid base a cable to keep two together are available

CAMAC PLASTIC OUTDOOR BIN



PRODUCT CODE

6904

DIMENSIONS

HEIGHT: 865 mm
 WIDTH: 560 mm
 DEPTH: 430 mm
 VOLUME: 140L

- 150 Litre capacity
- Slim fit against wall (430 mm wide)
- Unique Grab-Bag Feature

GALTYMORE 2 COMPARTMENT OUTDOOR BIN



PRODUCT CODE

6041

DIMENSIONS

HEIGHT: 1000 mm

DIAMETER: 400 mm

VOLUME: 2X39L



DERRYVEAGH OUTDOOR BIN



PRODUCT CODE

6042

DIMENSIONS

HEIGHT: 1000 mm

DIAMETER: 400 mm

VOLUME: 2X39L

- Hooded two compartment steel outdoor bin
- Silver epoxy powder coated.
- Supplied with Recycling graphics
- “Mixed Recycling” and “General Waste”
- Lockable
- 2 x 39 litre plastic liners
- Ground fixing bolts available

DOG WASTE LITTER BIN

PRODUCT CODE

6425R

DIMENSIONS

HEIGHT: 715 mm

WIDTH: 345 mm

DEPTH: 345mm

VOLUME: 50L



- 2mm Galvanised Pre-coated Steel
- Powder Coated in Epoxy Polyester
- Available with or without Pole
- Wall or Pole Mountable
- All Finishes & Colours available
- Special Lift Up Lid with Shelf Design
- Fitted with Heavy Duty Tri-Insert Lock
- Galvanised Liner included
- Handles fitted to Liner
- Stainless Piano Heavy Duty Door Hinge
- Screening/Labelling included as Standard
- Glove or Bag Holder Combination Unit available
- Text cut out with Gold backing, all Logos,
- Colours available



BICYCLE RACK

PRODUCT CODE

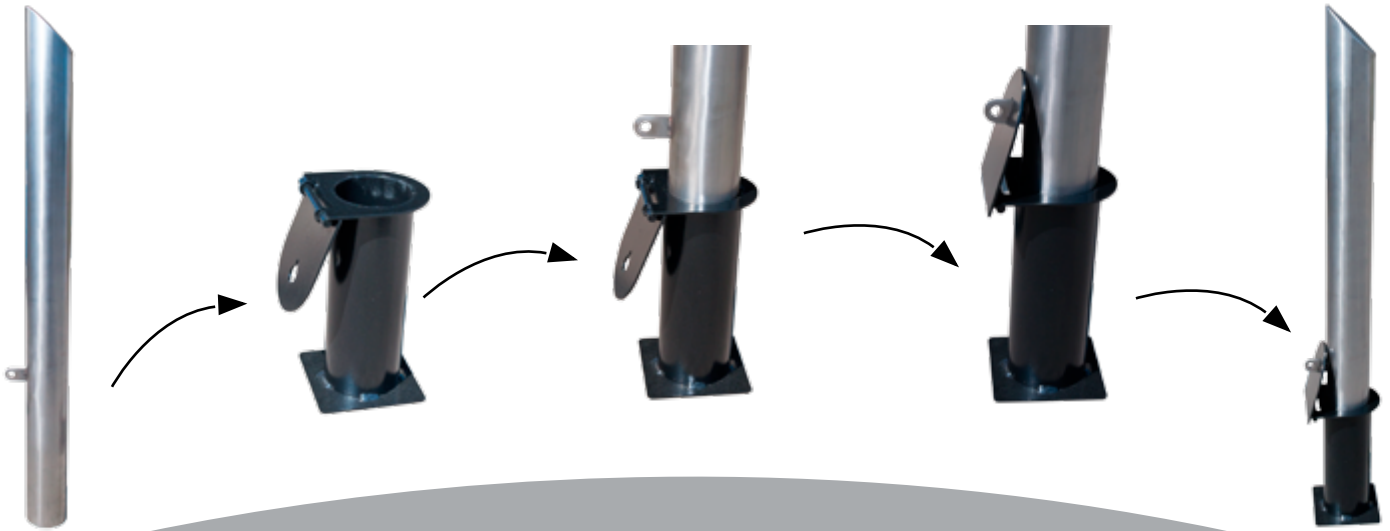
7000

- Manufactured in Steel
- Hot Dipped Galvanised Protective Coating
- Modular System - more can be added
- Ground Fixing holes pre-drilled



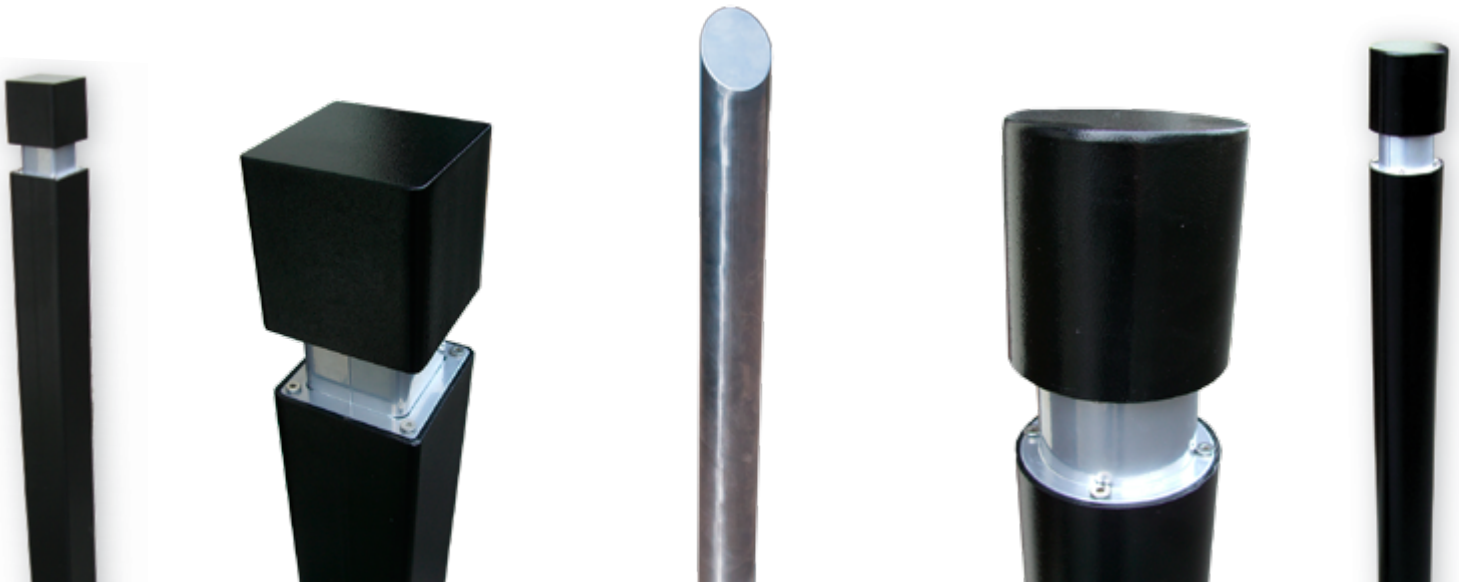
Caters for all makes & models of bicycles

Our outdoor bicycle racks are manufactured in steel and come with a protective coating for longevity and resistance against rusting from outdoor moisture. This robustness make. Paragon Products bike racks essential for locking bicycles securely. The Paragon Products outdoor cycle stands can be adapted to your specifications, making them perfect for any public park, college campus, school, town or city.



- Available in Stainless Steel
- Available in Powder coated Steel
- All Finishes & Colours available
- Flat, Curved or Rounded Top
- Lockable Ground Retention Socket Available
- Multiple Bollard Sizes available
- External Baseplate also Available

We offer choice in abundance when it comes to our bollards. The Paragon Products bollards come in a variety of sizes with the option for a flat, curved or rounded top. We provide a range of finishes and colours to suit your requirements, with reflective yellow tape an option for higher visibility during the night time. Durable and sturdy, our bollards can be manufactured to suit any environment.



CARDBOARD RECYCLE UNIT



PRODUCT CODE

6602

DIMENSIONS

HEIGHT: 760 mm

WIDTH: 310 mm

DEPTH: 315 mm

- manufactured from Zintec coated steel
- Powder Coated in epoxy polyester
- non-standard label design service included
- suitable for both indoor & Outdoor

4 WAY RECYCLING UNIT



PRODUCT CODE

6603

DIMENSIONS

HEIGHT: 1090 mm

WIDTH: 1360 mm

DEPTH: 510 mm

- Manufactured from Zintec coated Steel
- Powder Coated in Epoxy Polyester
- Lift up Lids or Colour Coded Rings available
- Fitted with Heavy Duty Locking System
- Galvanised Liner included
- Handles fitted to Liner
- Labelling included as Standard
- Non Standard Label Design Service included
- Suitable for both Indoor & Outdoor areas
- Available in Single or Double Unit accessible from 1 or 2 Sides
- Available with Sink Unit

4 WAY RECYCLING UNIT + SINK UNIT



PRODUCT CODE

6600

DIMENSIONS

HEIGHT: 1090 mm

WIDTH: 1110 mm

DEPTH: 510 mm

VOLUME: 100L

- Manufactured from Zintec coated Steel
- Powder Coated in Epoxy Polyester
- 4 Separate Openings for Segregation of Waste
- Fitted with Heavy Duty Locking System
- Galvanised Liners included
- Handles fitted to Liner
- Stock Labelling included as Standard
- Suitable for both Indoor & Outdoor areas
- Also in double and treble unit
- Stainless steel model available
- Available with Sink Unit

2 WAY SLIMLINE RECYCLING STATION



PRODUCT CODE

8030

DIMENSIONS
 HEIGHT: 1050 mm
 WIDTH: 540 mm
 DEPTH: 275 mm



SLIMLINE RANGE



3 WAY SLIMLINE RECYCLING STATION



PRODUCT CODE

8035

DIMENSIONS
 HEIGHT: 1150 mm
 WIDTH: 810mm
 DEPTH: 275 mm



3 WAY SLIMLINE RECYCLING STATION + SINK EXTENSION



PRODUCT CODE

8038

DIMENSIONS
 HEIGHT: 1150 mm
 WIDTH: 810mm
 DEPTH: 275 mm
 VOLUME: 100L

CONSTRUCTION 8030/8035/8038

- Manufactured from Galvanised Pre-coat ed Steel Body
- Galvanized liners-50l each
- Powder coated in Epoxy Polyester
- Colour Coded Openings
- Funnel for waste liquids on 4 way unit
- 5 Gallon Drum collects drinks waste in 4 way unit
- Colour Coded stock Labels to Suit
- Wing knob locking system
- Handles fitted to Liners

TRINITY SINGLE
PEDAL OPERATED RECYCLE UNIT



PRODUCT CODE

8049

TRINITY
RANGE



2 TRINITY SINGLE PEDAL
OPERATED UNITS JOINED
TOGETHER



3 TRINITY SINGLE PEDAL
OPERATED UNITS JOINED
TOGETHER

TRINITY 2 WAY RECYCLE BIN



PRODUCT CODE

8041

DIMENSIONS
HEIGHT: 1150 mm
WIDTH: 810mm
DEPTH: 275 mm

TRINITY 3 WAY RECYCLE BIN



PRODUCT CODE

8042

DIMENSIONS
HEIGHT: 1150 mm
WIDTH: 810mm
DEPTH: 275 mm

CONSTRUCTION 8049/8041/8042

- Manufactured from Pre-coated Steel
- Plastic Liners-50L each
- Optional pull out drawer system
- Powder-coated in Epoxy Polyester
- Available in a 2 Way or 3 Way System
- 2-3 Separate Openings all Colour Coded
- Colour Coded Labels to Suit
- Wing Knob locking system

TUCANA
RANGE

TUCANA 2 WAY RECYCLE STATION



PRODUCT CODE

8043

DIMENSIONS

HEIGHT: 1130 mm

WIDTH: 660 mm

DEPTH: 560 mm

CAPACITY: 2x87L



UNIT
WITH
VINYL
DESIGN

TUCANA 3 WAY RECYCLE STATION



PRODUCT CODE

8044

DIMENSIONS

HEIGHT: 1150 mm

WIDTH: 810mm

DEPTH: 275 mm

CAPACITY: 3x87L



CONSTRUCTION 8044/8043

- Manufactured from Pre-coated Steel
- Powder Coated in Epoxy Polyester
- Available in a 2 Way or 3 Way System
- Openings all Colour Coded
- Colour Coded Labels to Suit
- Heavy Duty Wing Knob Locking System
- Plastic Liners

RECYCLING

RECYCLING STATION

CUSTOM
MADE
RECYCLE
BINS



TRINITY 3 WAY + SINK EXTENSION



TUCANA 4 WAY + SINK EXTENSION

Facility to join stations together to form larger units

RECYCLING UNIT FOR CARDBOARD



PRODUCT CODE

8051

DIMENSIONS
 HEIGHT: 1050 mm
 WIDTH: 540 mm
 DEPTH: 275 mm

- Manufactured from pre-coated Zintec
- Powder-coated in epoxy polyester
- Galvanized liner on castors
- Handles fitted to liner
- Ease of access with lift up lid

SHOPPING CENTRE BINS



PRODUCT CODE

8060

DIMENSIONS
 HEIGHT: 1150 mm
 WIDTH: 810mm
 DEPTH: 275 mm

- Manufactured from Stainless Steel
- Galvanized 70L internal Liners
- Available in 2 or 3 way system
- 2-3 separate openings-all colour coded
- Facility for advertising signage

VELA RECYCLE STATION



PRODUCT CODE

6700

DIMENSIONS
 HEIGHT: 1150 mm
 WIDTH: 810mm
 DEPTH: 275 mm

- Manufactured in Zintec pre-coated steel
- Powder Coated in Epoxy Polyester
- 4 Separate Openings for Segregation of Waste
- Colour Coded Rings
- Fitted with Heavy Duty Locking System
- Stock Labelling included as Standard
- Available with Sink Unit
- Takes 120L Wheelie Bin

RANGE OF COLOURS AVAILABLE
 STOCK LABELLING AS STANDARD

BENCORR 3 WAY PLASTIC RECYCLING STATION



PRODUCT CODE

6601

DIMENSIONS

HEIGHT: 950 mm

WIDTH: 600 mm

DEPTH: 400 mm

- Manufactured from high impact plastic
- 3 Bag Holders
- Ideal for a wide range of internal waste recycling situations
- Posters are easy to change behind the clear acrylic window
- Sack retaining feature for discreet fitting of refuse bag.
- Colour coded apertures and graphics as standard.
- Area available for personalised graphic or company logo.
- Slim body profile makes it ideal for placement along corridors and narrow walkways.
- Easy to fit rotationally moulded A3 signage kit are available, click here for more information
- Interchange lids allow bespoke waste streams to suit your needs.



3 Bag Holders



A3 Signage Kit

Height including signage: 1140mm (approx.)

HIVE BIN



PRODUCT CODE

3201

DIMENSIONS

HEIGHT: 800 mm
 WIDTH: 350 mm
 DEPTH: 430 mm
 VOLUME: 70L

- Galvanised Pre-coated Steel Body
- Powder Coated in Epoxy Polyester
- Pivoting Lid holds bag in place



ROUND 2 WAY RECYCLING BIN
 STAINLESS STEEL



PRODUCT CODE

6943

DIMENSIONS

HEIGHT: 850 mm
 WIDTH: 500 mm
 DEPTH: 500 mm

- Manufactured in Stainless Steel
- 2 x Plastic Liner

ROUND WAY
 RECYCLING BIN STAINLESS STEEL



PRODUCT CODE

6944

DIMENSIONS

HEIGHT: 770 mm
 WIDTH: 380 mm
 DEPTH: 380 mm

- Manufactured in Stainless Steel
- Plastic Liner 50L

SLIM PLASTIC RECYCLING 60L



PRODUCT CODE

6922

DIMENSIONS
 HEIGHT: 580 mm
 WIDTH: 320 mm
 DEPTH: 460 mm
 VOLUME: 60L

- Capacity: 60L
- 3 Different lids for effective waste control.
- Designed to fit restricted and smaller spaces.
- Easy to clean and maintain.
- Materials: Polypropylene

SWING TOP RECYCLE BIN



PRODUCT CODE

1030

DIMENSIONS
 HEIGHT: 980 mm
 WIDTH: 305 mm
 DEPTH: 305 mm

- Galvanised Pre-coated Steel Body
- Powder Coated in Epoxy Polyester
- Pivoting Lid holds bag in place

METRO COMPACT RECYCLING BINS



PRODUCT CODE

6911

DIMENSIONS
 HEIGHT: 1100 mm
 WIDTH: 300 mm
 DEPTH: 295 mm

- Galvanised Pre-coated Steel Body
- Powder Coated in Epoxy Polyester
- Removable Lid holds bag in place
- Apertures: Round , Hexagonal or Paper Slot
- Screening/Labelling included as Standard



SLIM PLASTIC BIN



PRODUCT CODE

6921

DIMENSIONS

HEIGHT: 630 mm

WIDTH: 297 mm

DEPTH: 587 mm

CUPS & LIQUIDS DISPOSAL BIN



PRODUCT CODE

6925

DIMENSIONS

HEIGHT: 570 mm

WIDTH: 354 mm

DEPTH: 354 mm

CAPACITY: 500 Cups

- Central funnel for waste liquids disposal
- Removable Cup Liner
- Cup Diameter up to 79mm
- Waste cup bottom release lever
- Labelling available



PUSH BIN



PRODUCT CODE

6917

DIMENSIONS

HEIGHT: 980 mm

WIDTH: 360 mm

DEPTH: 300 mm

VOLUME: 60L

- Galvanised Pre-coated Steel Body
- Powder Coated in Epoxy Polyester
- Screening/Labelling included as Standard

30L

DIMENSIONS

HEIGHT: 415 mm

WIDTH: 410 mm

DEPTH: 320 mm



PLASTIC RECYCLE BIN 30-50 L

PRODUCT CODE

6936

50L

DIMENSIONS

HEIGHT: 620 mm

WIDTH: 410 mm

DEPTH: 320 mm



25L

DIMENSIONS

HEIGHT: 510 mm

WIDTH: 215 mm

DEPTH: 360 mm



PUSH LID 25-40L

PRODUCT CODE

6937

40L

DIMENSIONS

HEIGHT: 514 mm

WIDTH: 365 mm

DEPTH: 360 mm



LIFFEY PLASTIC RECYCLE BINS



PRODUCT CODE

6901

DIMENSIONS
 HEIGHT: 1035 mm
 WIDTH: 660 mm
 DEPTH: 635 mm
 VOLUME: 100L

- Manufactured from high impact plastic
- Large capacity for high use areas
- 2 x 105 Litre liners for easier emptying
- Colours; Beige, Grey

MONTPELIER RECYCLE BINS



PRODUCT CODE

6902

DIMENSIONS
 HEIGHT: 730 mm
 WIDTH: 320 mm
 DEPTH: 305 mm

- Rigid Cardboard Design
- Takes standard 26" X 44" Sack
- Reusable once Bag is used as Liner

SCHOOL LITTER & RECYCLE BIN



PRODUCT CODE

6432

DIMENSIONS
 HEIGHT: 500 mm
 WIDTH: 400 mm
 DEPTH: 250 mm

- Galvanised Pre-coated Steel Body
- Powder Coated in Epoxy Polyester
- Internal Liner complete with handles
- All Edges Rounded, No Sharp Edges
- Heavy Duty Locking System



PLASTIC RECYCLE BIN



PRODUCT CODE

6923

DIMENSIONS
 HEIGHT: 788 mm
 WIDTH: 394 mm
 DEPTH: 419 mm
 VOLUME: 90L

- Sleek Design
- Liner cinch allows for bag retention
- Lid with Recycle Slot
- Labelling available

CARDBOARD RECYCLE UNIT



PRODUCT CODE

6912

DIMENSIONS
 HEIGHT: 760 mm
 WIDTH: 310 mm
 DEPTH: 310 mm

- Rigid Cardboard Design
- Takes standard 26" X 44" Sack
- Reusable once Bag is used as Liner

ROUND RECYCLE BIN



PRODUCT CODE

5031

DIMENSIONS
 HEIGHT: 800 mm
 DIAMETER: 350 mm
 VOLUME: 70L

- Galvanised Pre-coated Steel Body
- Powder Coated in Epoxy Polyester
- Bins can be Linked together
- Removable Lid
- Available in Stainless Steel
- Labelling included as Standard



70L

PRODUCT CODE

6932

DIMENSIONS
HEIGHT: 673 mm
WIDTH: 412 mm
DEPTH: 410 mm



45L

PRODUCT CODE

6931

DIMENSIONS
HEIGHT: 600 mm
WIDTH: 398 mm
DEPTH: 410 mm



30L

PRODUCT CODE

6930

DIMENSIONS
HEIGHT: 435 mm
WIDTH: 398 mm
DEPTH: 410 mm

SINGLE RECYCLING CONFIDENTIAL WASTE BIN



PRODUCT CODE

6916

DIMENSIONS
HEIGHT: 1130 mm
WIDTH: 460 mm
DEPTH: 380 mm
VOLUME: 70L



SINGLE RECYCLING BINS



PRODUCT CODE

6915

DIMENSIONS
HEIGHT: 1060 mm
WIDTH: 390 mm
DEPTH: 390 mm
VOLUME: 70L



CADDY BINS



PRODUCT CODE

3072

DIMENSIONS
 HEIGHT: 300 mm
 WIDTH: 200 mm
 DEPTH: 280 mm
 VOLUME: 12L



PRODUCT CODE

3071

DIMENSIONS
 HEIGHT: 410 mm
 WIDTH: 380 mm
 DEPTH: 350 mm
 VOLUME: 25L



PRODUCT CODE

3070

DIMENSIONS
 HEIGHT: 410 mm
 WIDTH: 380 mm
 DEPTH: 380 mm
 VOLUME: 40L



- Contemporary styling for waste disposal and separation
- Efficient size and shape for tight spaces
- Polyethylene construction
- Durable, will not rust, chip or peel and resists dents
- Trolleys available which lock together securely for efficiently transporting heavy waste
- Trolley accepts all Slim Jim container sizes
- Attachable back display signage



FOOD WASTE BIN 70L



PRODUCT CODE

2080

DIMENSIONS

HEIGHT: 870 mm

WIDTH: 360 mm

DEPTH: 420 mm

VOLUME: 70L

FOOD WASTE BIN 50L



PRODUCT CODE

2082

DIMENSIONS

HEIGHT: 720 mm

WIDTH: 350 mm

DEPTH: 270 mm

VOLUME: 50L

FOOD WASTE BIN 20L



PRODUCT CODE

2020

DIMENSIONS

HEIGHT: 570 mm

WIDTH: 210 mm

DEPTH: 270 mm

VOLUME: 20L



plastic

90L

PRODUCT CODE

L003

DIMENSIONS
HEIGHT: 760 mm
WIDTH: 270 mm
DEPTH: 510 mm



plastic

50L

PRODUCT CODE

L004

DIMENSIONS
HEIGHT: 560 mm
WIDTH: 280 mm
DEPTH: 370 mm



plastic

30L

PRODUCT CODE

L005

DIMENSIONS
HEIGHT: 340 mm
WIDTH: 280 mm
DEPTH: 370 mm



galvanised

40L

PRODUCT CODE

L006

DIMENSIONS
HEIGHT: 830 mm
WIDTH: 230 mm
DEPTH: 230 mm



galvanised

70L

PRODUCT CODE

L007

DIMENSIONS
HEIGHT: 810 mm
WIDTH: 230 mm
DEPTH: 410 mm



galvanised

100L

PRODUCT CODE

L008

DIMENSIONS
HEIGHT: 780 mm
WIDTH: 420 mm
DEPTH: 330 mm



galvanised

70L

PRODUCT CODE

L010

DIMENSIONS
HEIGHT: 700 mm
WIDTH: 340 mm
DEPTH: 340 mm



galvanised

25L

PRODUCT CODE

L011

DIMENSIONS
HEIGHT: 370 mm
WIDTH: 270 mm
DEPTH: 270 mm

LARGE HEALTHCARE BIN 70L



PRODUCT CODE

2080

DIMENSIONS

HEIGHT: 870 mm
 WIDTH: 360 mm
 DEPTH: 420 mm
 BAG: 26` x 44`
 VOLUME: 70L

MEDIUM HEALTHCARE BIN 50L



PRODUCT CODE

2082

DIMENSIONS

HEIGHT: 720 mm
 WIDTH: 350 mm
 DEPTH: 270 mm
 BAG: 20` x 37`
 VOLUME: 50L

SMALL HEALTHCARE BIN 30L



PRODUCT CODE

2030

DIMENSIONS

HEIGHT: 570 mm
 WIDTH: 310 mm
 DEPTH: 290 mm
 BAG: 20` x 37`
 VOLUME: 30L

SMALL HEALTHCARE PEDAL BIN 30L



PRODUCT CODE

2020

DIMENSIONS

HEIGHT: 570 mm
 WIDTH: 210 mm
 DEPTH: 270 mm
 BAG: 15` x 24`
 VOLUME: 20L

DISABILITY-FRIENDLY BIN LARGE 70L



PRODUCT CODE

D2000

DIMENSIONS

HEIGHT: 810 mm
 WIDTH: 400 mm
 DEPTH: 600 mm
 BAG: 26` x 44`
 VOLUME: 70L

DISABILITY-FRIENDLY BIN MEDIUM 50L



PRODUCT CODE

D2010

DIMENSIONS

HEIGHT: 810 mm
 WIDTH: 400 mm
 DEPTH: 600 mm
 BAG: 20` x 37`
 VOLUME: 50L

DISABILITY-FRIENDLY BIN SMALL 20L



PRODUCT CODE

D2020

DIMENSIONS

HEIGHT: 570 mm
 WIDTH: 210 mm
 DEPTH: 270 mm
 BAG: 15` x 24`
 VOLUME: 20L

MEDIUM HEALTHCARE BIN 50L
(NO DOOR)

PRODUCT CODE

D2083

DIMENSIONS

HEIGHT: 575 mm
 WIDTH: 390 mm
 DEPTH: 380 mm
 BAG: 26` x 44`
 VOLUME: 50L

LARGE HEALTHCARE GLASS BIN 70L



PRODUCT CODE

G2080

DIMENSIONS

HEIGHT: 810 mm
 WIDTH: 380 mm
 DEPTH: 400 mm
 VOLUME: 50L
 BAG: 26`X 44`

MEDIUM HEALTHCARE GLASS BIN 50L



PRODUCT CODE

G2082

DIMENSIONS

HEIGHT: 720 mm
 WIDTH: 330 mm
 DEPTH: 320 mm
 VOLUME: 30L
 BAG: 20`X 37`

SMALL HEALTHCARE GLASS BIN 50L

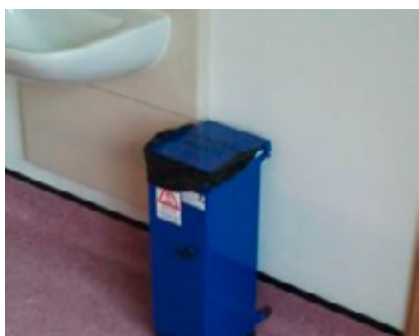


PRODUCT CODE

G2085

DIMENSIONS

HEIGHT: 570 mm
 WIDTH: 210 mm
 DEPTH: 270 mm
 VOLUME: 12L
 BAG: 15`X 24`



COLOURED OPTION



- Fire Retardant Cert. Ref. Sii 210/2
- Anti-Bacterial Finish
- Medical Grade Non Porous
- Shock Cord
- Stainless Steel Pedal
- Heavy Duty Lock
- Screening Or Labels
- Castors Available
- Rubber Wall Buffers
- Rubber Floor Buffers

LARGE HEALTHCARE BIN F/A



PRODUCT CODE

PSH 3081FA

DIMENSIONS

HEIGHT: 800 mm

WIDTH: 400 mm

DEPTH: 480 mm

VOLUME: 70L



LARGE HEALTHCARE BIN N/D

PRODUCT CODE

PSH 3081

DIMENSIONS

HEIGHT: 800 mm

WIDTH: 400 mm

DEPTH: 480 mm

VOLUME: 70L



MEDIUM HEALTHCARE BIN

PRODUCT CODE

PSH 3082

DIMENSIONS

HEIGHT: 800 mm

WIDTH: 400 mm

DEPTH: 370 mm

VOLUME: 50L



SMALL HEALTHCARE BIN

PRODUCT CODE

PSH 3021

DIMENSIONS

HEIGHT: 620 mm

WIDTH: 250 mm

DEPTH: 400 mm

VOLUME: 30L





SINGLE UNIT

PRODUCT CODE

3200

DIMENSIONS

HEIGHT: 800 mm

WIDTH: 380 mm

DEPTH: 500 mm



DOUBLE UNIT

PRODUCT CODE

3201

DIMENSIONS

HEIGHT: 800 mm

WIDTH: 800mm

DEPTH: 500 mm

TRIPLE UNIT

PRODUCT CODE

3202

DIMENSIONS

HEIGHT: 800 mm

WIDTH: 1050 mm

DEPTH: 430 mm



COLOURED OPTION-
BIN WITH COLOURED
LID
OPTION



- Constructed from Heavy Duty Box Section & Zintec Pre-Coated Steel
- Frame is Polyester Powder Coated in a durable Textured Paint. Lids are Colour Coded
- Colours can be customised to suit all requirements.
- Heavy Duty Swivel Castors with Rubber Wheels, 2 lockable & 2 Fixed
- Handle fitted to Double/Triple Unit (available for single)

MOBILE 3-4 SHELF SECURE LOCKABLE CABINET

PRODUCT CODE

4305

DIMENSIONS

HEIGHT: 600 mm

WIDTH: 400 mm

DEPTH: 300 mm



- Rust Resistant Body
- Multiple Shelves
- Swivel Castors
- Labelling Included
- Secure Locking
- All Colours available
- Anti-bacterial finish available



MOBILE SHELVED STAINLESS STEEL CABINETS

PRODUCT CODE

4301

DIMENSIONS

HEIGHT: 900 mm

WIDTH: 700 mm

DEPTH: 400 mm

- Stainless Steel
- Shelves available
- castors available
- Labelling Included
- Secure Locking



HAZARDOUS CHEMICAL STORAGE CABINET

PRODUCT CODE

4300

DIMENSIONS

HEIGHT: 900 mm

WIDTH: 450 mm

DEPTH: 450 mm

- Rusty Resistant Body
- Multiple Shelf Option
- Secure & Lockable
- Labelling Included
- All Colours available
- Stainless Steel Drip Tray available
- Anti-bacterial finish available
- All Sizes Catered For



With Alarm
System



DRUG STORAGE BOX CABINET

PRODUCT CODE

4303

DIMENSIONS

HEIGHT: 300 mm
WIDTH: 300 mm
DEPTH: 300 mm

- Powder Coated Body
- Shelf Option available
- Secure & Lockable
- Labelling Included
- All Sizes Catered For
- All Colours available
- Anti-bacterial finish available



NEEDLE DEPOSIT CABINET

PRODUCT CODE

4304

DIMENSIONS

HEIGHT: 900 mm
WIDTH: 500 mm
DEPTH: 350 mm

- Galvanised Pre-coated Steel Body
- Powder Coated in Epoxy Polyester
- Heavy Duty Durable Design
- Cam-lock Fitted with Keys supplied
- Labelling Design Service for special requirements
- Castors can also be fitted
- Other sizes catered for



SHARPS CONTAINER 6L

PRODUCT CODE

4305

DIMENSIONS

HEIGHT: 230 mm
WIDTH: 260 mm
DEPTH: 220 mm
CAPACITY: 6L

- Galvanised Pre-coated Steel Body
- Powder Coated in Epoxy Polyester
- Cam-lock Fitted with Keys supplied
- Labelling Design Service for special requirements



TALL STORAGE CABINET

PRODUCT CODE

4302

DIMENSIONS

HEIGHT: 2300 mm
WIDTH: 360 mm
DEPTH: 430 mm

- Galvanised Pre-coated Steel Body
- Powder Coated in Epoxy Polyester
- 5 Individual Shelves
- Special Wall Fixing for Support
- Heavy Duty Durable Design
- Special 3 Point Strong Locking System
- Durable Handle fitted
- Labelling Design Service for special requirements
- Castors can also be fitted
- Other sizes catered for



CYLINDER TROLLEY C / D

PRODUCT CODE

4501

DIMENSIONS

HEIGHT: 1035 mm
 WIDTH: 320 mm
 DEPTH: 370 mm
 TYPE: C / D

- Manufactured in Heavy Duty Tubular
- Steel with a durable base plate
- Lockable swivel bar to hold in cylinder
- Powder Coated grey - all colours available



CYLINDER TROLLEY E / F

PRODUCT CODE

4502

DIMENSIONS

HEIGHT: 1160 mm
 WIDTH: 200 mm
 DEPTH: 290 mm
 TYPE: E / F

- Manufactured in Heavy Duty Tubular
- Steel with a durable base plate
- Powder Coated grey
- all colours available



CYLINDER TROLLEY D / E

PRODUCT CODE

4503

DIMENSIONS

HEIGHT: 1160 mm
 WIDTH: 390 mm
 DEPTH: 350 mm
 TYPE: D / E

- Manufactured in Zintec Coated Steel
- 30 Heavy Duty Steel Box Section
- Swivel Castors fitted - 2 x Lockable
- Powder Coated blue



CYLINDER TROLLEY G / J

PRODUCT CODE

4504

DIMENSIONS

HEIGHT: 1070 mm
 WIDTH: 360 mm
 DEPTH: 390 mm
 TYPE: G / J

- Manufactured in Steel
- Powder Coated Light Grey
- All Colours & Finishes available
- Swivel Bar Locking System
- Chain Locking System available
- Durable Base Plate
- Anti-static Rubber Wheels
- Stainless Steel Unit also available



CYLINDER TROLLEY P / D

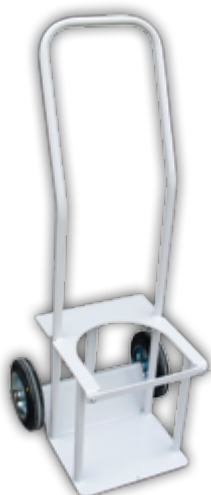
PRODUCT CODE

4505

DIMENSIONS

HEIGHT: 1160 mm
 WIDTH: 390 mm
 DEPTH: 390 mm
 TYPE: P / D

- Manufactured in Steel
- Powder Coated Light Grey
- Holds up to 4 Cylinders
- 2 Cylinder Trolley available
- All Colours & Finishes available
- Swivel Bar Locking System
- Durable Base Plate
- Anti-static Rubber Wheels
- Stainless Steel Unit also available



MVE LAB CYLINDER TROLLEY

PRODUCT CODE

4507

DIMENSIONS

HEIGHT: 1160 mm
 WIDTH: 390 mm
 DEPTH: 350 mm
 TYPE: M / V

- Manufactured in Steel
- Powder Coated Light Grey
- Swivel Bar Locking System
- Chain Locking System available
- Durable Base Plate
- Anti-static Rubber Wheels
- Stainless Steel Unit also available
- available

MVE LAB CYLINDER TROLLEY

PRODUCT CODE

4508

DIMENSIONS

HEIGHT: 1100 mm

WIDTH: 310 mm

DEPTH: 800 mm



- Manufactured in Steel
- Powder Coated Light Grey
- Holds up to 4 Cylinders
- 2 Cylinder Trolley available
- All Colours & Finishes available
- Swivel Bar Locking System
- Durable Base Plate
- Anti-static Rubber Wheels
- Stainless Steel Unit also available
-

CYLINDER WALL/TROLLEY MOUNTING BRACKETS



PRODUCT CODE

4515

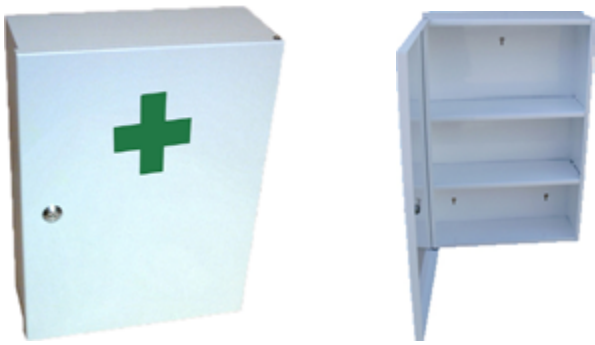
- Can be mounting to Bed /Trolley/Wall
- Heavy Duty Design



PRODUCT CODE

4516

- Wall Mounting Bracket
- Heavy Duty Design



FIRST AID CABINET LARGE UNIT

PRODUCT CODE

3500

DIMENSIONS

HEIGHT: 500 mm

WIDTH: 300 mm

DEPTH: 120 mm



FIRST AID BOX SMALL UNIT

PRODUCT CODE

3505

DIMENSIONS

HEIGHT: 400 mm

WIDTH: 300 mm

DEPTH: 120 mm



FIRST AID CABINET EX-LARGE UNIT

PRODUCT CODE

3525

DIMENSIONS

HEIGHT: 550 mm

WIDTH: 300 mm

DEPTH: 120 mm



DOUBLE FIRST AID CABINET

PRODUCT CODE

3510

DIMENSIONS

HEIGHT: 450 mm

WIDTH: 320 mm

DEPTH: 250 mm



- Manufactured from Zintec Pre-Coated Steel
- Polyester Powder Coated
- All Colours & Finishes available
- Screening/Labelling available
- Supplied with Basic Cam Locking System with 2 Keys
- Wall Fixing Holes & Screws provided
- Labelling available
- Supplied with Adjustable Shelf (2 positions)
- Anti-bacterial Finish as Standard



CANTEEN TRAY TROLLEY

PRODUCT CODE

3404S

- Stainless Steel construction
- Swivel Castors Fitted
- 2 Lockable Castors

stainless steel



LARGE TROLLEY

PRODUCT CODE

3405S

- Stainless Steel 304 Grade
- Castors Fitted As Standard
- Heavy Duty Durable Design
- All Colours Available
- All Sizes Catered For

stainless steel



MEDICAL DISPENSING TROLLEY

PRODUCT CODE

3403S

DIMENSIONS

HEIGHT: 810 mm
 WIDTH: 610 mm
 DEPTH: 410 mm

- Galvanised Pre-coated Steel Body
- Powder Coated in Epoxy Polyester
- 2 Separate Shelves
- Movable Separators on each shelf
- Swivel Castors Fitted
- Rubber Wall Buffer Fitted to Wheels
- Heavy Duty Durable Design
- Suitable for Lever Arch & Ring Binders
- Sloped Shelves for better support

stainless steel

2 TIER STAINLESS STEEL TROLLEYS

**PRODUCT CODE****3203****DIMENSIONS**

HEIGHT: 850 mm

WIDTH: 450 mm

DEPTH: 900 mm

stainless steel

- Manufactured from Stainless Steel
- Choice of two or three shelves
- 4 Swivel 2 Lockable Castors Fitted

3 TIER STAINLESS STEEL TROLLEYS

**PRODUCT CODE****3205****DIMENSIONS**

HEIGHT: 850 mm

WIDTH: 450 mm

DEPTH: 900 mm

stainless steel

- Manufactured from Stainless Steel
- Choice of two or three shelves
- 4 Swivel 2 Lockable Castors Fitted

We offer trolleys suited to your specifications with a choice of separate shelving options, sloped shelves for better support and movable separators on each shelf making the storage of food trays and medical records easier on you. Our range of colours and labelling options also allow for better separating and storage of your records, healthcare products and food trays. Mobility is a key feature of this range as our medical trolleys are fitted with swivel castors. We match our mobility with durability as seen with our galvanized pre-coated steel body heavy duty durable design manufactured to maintain the trolley's high quality.



MEDICAL DISPENSING TROLLEY

PRODUCT CODE

3402S

DIMENSIONS

HEIGHT: 750 mm
WIDTH: 450 mm
DEPTH: 450 mm

- Galvanised Pre-coated Steel Body
- Powder Coated in Epoxy Polyester
- 2 Separate Shelves
- Movable Separators on each shelf
- Swivel Castors Fitted
- Rubber Wall Buffer Fitted to Wheels
- Heavy Duty Durable Design
- Suitable for Lever Arch & Ring Binders
- Sloped Shelves for better support



MEDICAL RECORDS TROLLEY

PRODUCT CODE

3400

- Galvanised Pre-coated Steel Body
- Powder Coated in Epoxy Polyester
- 2 Separate Shelves
- Movable Separators on each shelf
- Swivel Castors Fitted
- Rubber Wall Buffer Fitted to Wheels
- Heavy Duty Durable Design
- Suitable for Lever Arch & Ring Binders
- Sloped Shelves for better support



DISPENSING TRAY TROLLEY

PRODUCT CODE

3401

- Individual Tray Shelves
- Stainless Steel Top
- Rubber Wall Protectors
- All Colours Available
- 4 Swivels Castors
- 2 Lockable Castors

Our medical trolleys range provides high quality options for the storage of medical records, food trays or any medical equipment to all services within the healthcare sector. Our medical trolleys take into account the need for hospitals, nursing facilities or primary care specialists to maintain the highest level of storage space. That is why Paragon Products range of medical trolleys provides for mobility, storage space and durability in equal measure.

SHARPS 60/22L BIN TROLLEY



PRODUCT CODE

3210

DIMENSIONS

HEIGHT: 800 mm
 WIDTH: 420 mm
 DEPTH: 400 mm

SHARPS 60L BIN TROLLEY



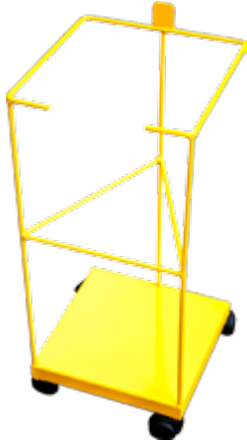
PRODUCT CODE

3211

DIMENSIONS

HEIGHT: 800 mm
 WIDTH: 420 mm
 DEPTH: 400 mm

STANDARD SHARPS TROLLEY



PRODUCT CODE

3214

DIMENSIONS

HEIGHT: 665 mm
 WIDTH: 300 mm
 DEPTH: 300 mm

SHARPS 30L TROLLEY SMALL



PRODUCT CODE

3213

DIMENSIONS

HEIGHT: 400 mm
 WIDTH: 420 mm
 DEPTH: 400 mm

SHARPS BIN WALL HOLDER



PRODUCT CODE

3216

We offer our trolleys in a variety of sizes: 60L, 30L, 22L, and 12L. To maintain sanitation while disposing of used sharps, our trolleys are manufactured with sharps bin trolleys range includes a special bracket option to keep lids open and is silent closing. Also, our trolleys come with 4 swivel trolley wheels and a locking system to allow for mobility. Quality assured, our Sharps Bin Trolleys are manufactured in pre-coated steel therefore guaranteeing durability and longevity.

METHADONE BIN



PRODUCT CODE

MB

DIMENSIONS

HEIGHT: 870 mm

WIDTH: 425 mm

DEPTH: 420 mm

MEDIUM HEALTHCARE
BIN WITH PLASTIC LINER

PRODUCT CODE

2084

DIMENSIONS

HEIGHT: 720 mm

WIDTH: 400 mm

DEPTH: 400 mm

VOLUME: 50L

LARGE HEALTHCARE
BIN SLOPED TOP

PRODUCT CODE

2080ST

DIMENSIONS

HEIGHT: 870 mm

WIDTH: 360 mm

DEPTH: 420 mm

VOLUME: 70L

SMALL REMOVABLE
BODY PEDAL BINS

PRODUCT CODE

1075

DIMENSIONS

HEIGHT: 595 mm

WIDTH: 240 mm

DEPTH: 230 mm

VOLUME: 50L

LARGE REMOVABLE
BODY PEDAL BINS

PRODUCT CODE

1070

DIMENSIONS

HEIGHT: 820 mm

WIDTH: 425 mm

DEPTH: 320 mm

VOLUME: 70L

WALL MOUNTED
BINS

PRODUCT CODE

W2080

DIMENSIONS

HEIGHT: 810 mm

WIDTH: 400 mm

DEPTH: 600 mm

VOLUME: 70L



RESTRICTED ACCESS BIN



PRODUCT CODE

RAB

DIMENSIONS

HEIGHT: 740 mm

WIDTH: 350 mm

DEPTH: 300 mm

HEALTHCARE

- VINYL LABEL
- MAGNETIC LABEL
- SCREENED LABEL



RECYCLING

- VINYL LABEL
- MAGNETIC LABEL

GENERAL



FOOD



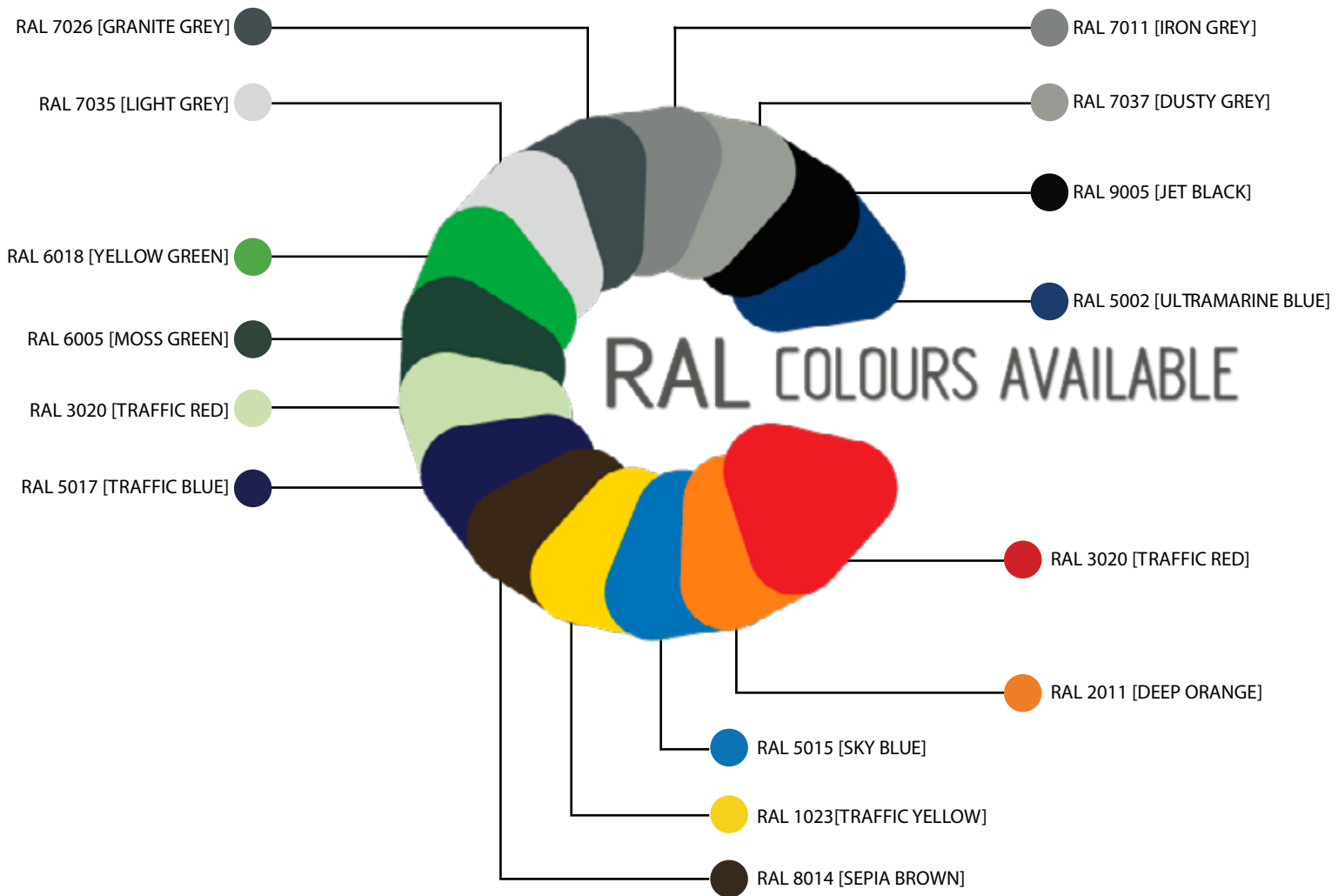
RECYCLE



PLASTIC



TALTECH & PARAGON STOCKED RAL COLOUR CHART





St. JAMES'S HOSPITAL



OFFICE

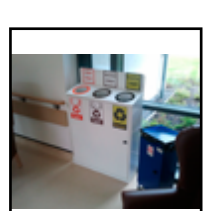
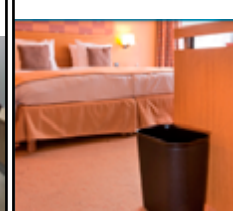
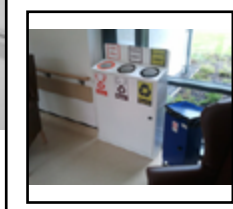


RESTAURANT



St. JAMES`S HOSPITAL







Taltech Engineering Holdings Ltd
Unit 4-5 Jamestown Road Industrial Estate

Kylemore Way

Inchicore, Dublin 8

Phone: +353 (0)1 453 6600

Fax: +353 (0)1 478 3069

Websites

WWW.PARAGONPRODUCTS.IE

WWW.TALTECH.IE



ALL RIGHT RESERVED
PARAGONPRODUCTS 2016